

SUNNEN

**HEAVY DUTY
CAP AND ROD
GRINDER**



MODEL CRG-750

**REPAIR
PARTS
CATALOG**

SUNNEN[®]
PRODUCTS COMPANY
7910 MANCHESTER • ST. LOUIS, MO.
Sunnen Products Co., Ltd. Chatham, Ontario
Trademark Licensee

INTRODUCTION

This parts catalog covers the Sunnen Model CRG-750 Heavy Duty Cap and Rod Grinder.

Item numbers on each illustration are keyed to the corresponding parts list, providing a descriptive identification of each part.

This parts list includes assemblies and detail parts which may require replacement. Items listed without a part number can be obtained as a component of the complete assembly of which it is a part. For parts not listed in this catalog, contact the Automotive Sales Department, Sunnen Products Company.

Standard hardware items are listed with complete descriptions. It is important to replace such an item with one having the same dimensions as the original.

HOW TO USE THIS PARTS CATALOG

- Step 1. — Locate desired part on the proper illustration. Note its item number.
- Step 2. — Locate this item number in the parts list pertaining to the illustration.
- Step 3. — If the item has a part number listed, order by this part number and the description. Parts in light face type are shipped as components of a preceding part number.
- Step 4. — If no part number is listed, order the part number of the unit of which the desired part is a component. When neither part number or component is listed it will be necessary to contact the Sunnen Automotive Sales Department and describe the part required. **ORDER ONLY BY PART NUMBER AND DESCRIPTION — NOT by item number.**

HOW TO ORDER

When ordering replacement parts be sure to include the following information to insure prompt shipment of correct parts:

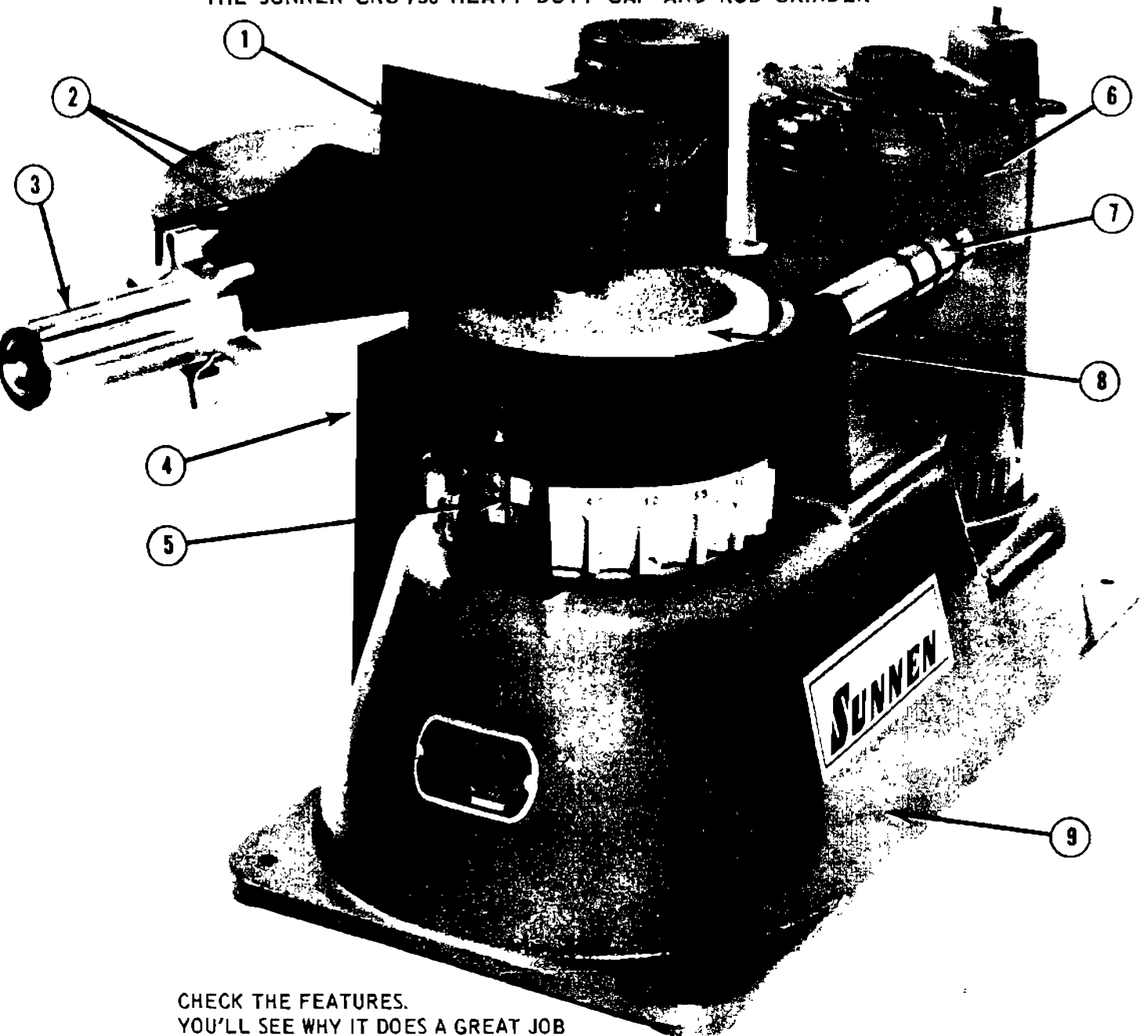
1. The model and serial number of the Cap and Rod Grinder, obtained from the name plate.
2. The part number and description of each part desired, obtained from this parts catalog.
3. The quantity of each part desired.

SUNNEN PRODUCTS COMPANY
7910 MANCHESTER AVENUE
ST. LOUIS, MISSOURI 63143

PHONE: 314 ST. 1-2100
TWX: 314-566-0098
TELEX: 044-888

Sunnen Products Co., Ltd., Chatham, Ontario
Trademark Licensee

THE SUNNEN CRG-750 HEAVY DUTY CAP AND ROD GRINDER



**CHECK THE FEATURES.
YOU'LL SEE WHY IT DOES A GREAT JOB**

1. HARDENED STEEL FACE PLATE. Assures permanent accuracy.
2. SAFETY GUARDS. Completely cover grinding wheel and trap the cuttings and sparks.
3. FAST ACTION CLAMP. Just a twist of the wrist assures positive set-up.
4. GRIT COLLECTOR. Removable tray catches metal cuttings and dirt.
5. EASY-TO-READ MICROMETER FEED. Positive setting. Will not "creep" or back off.
6. TOTALLY ENCLOSED, DUST FREE MOTOR. 115V, single phase, 60 cycle.
7. PRECISION-GROUND, HARDENED STEEL LOCATING PIN. Accommodates all types of rods, including step-type and tongue-and-groove.
8. LONG-LIFE, FAST-CUTTING 6" GRINDING WHEEL.
9. HEAVY, STRESS-RELIEVED HOUSING. Can't warp. Encloses vibration-free belt drive. Does not require fastening to bench.

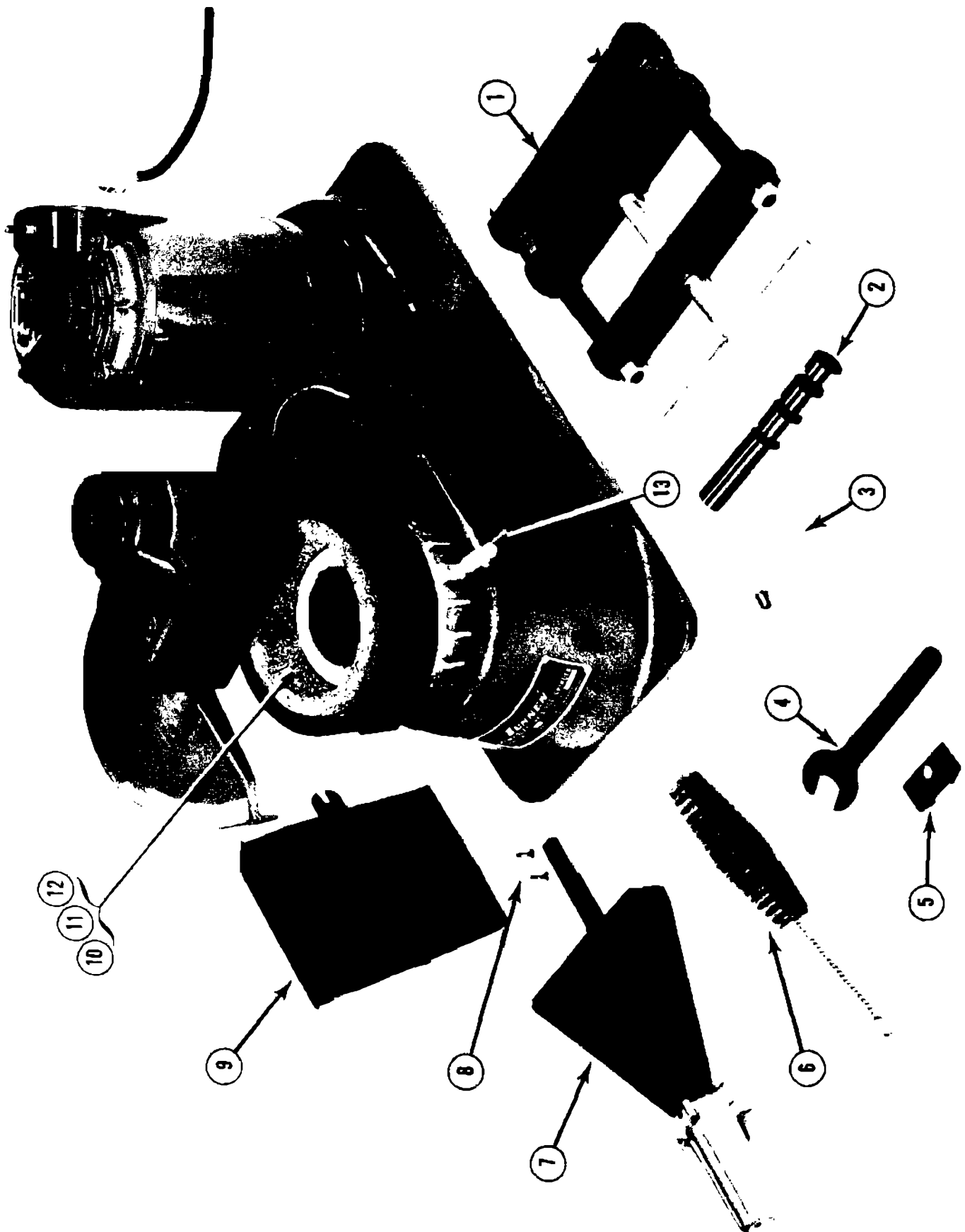


Figure 1

PARTS LIST COVERING FIGURE "A"

ITEM NO.	ORDER BY PART NUMBER	DESCRIPTION
1	CRG-960A Rod Clamping Fixture
2	CRG-903A Gage Rod
3	CRG-330A Diamond Dresser
4	CRG-496A Wrench (Special 7/8" Open End)
5	CRG-996A Wrench (Special)
6	LBN-427A Brush
7	CRG-930A Clamp Rod Assembly <i>with</i>
8	 Screws (8-32 x 3/4 Flat Hd. Soc. Cap)
9	CRG-915A Dust Pan
10	CRG-803 Grinding Wheel (Soft)
11	CRG-805 Grinding Wheel (Standard)
12	CRG-807 Grinding Wheel (Hard)
13	CRG-908A Hand Wheel Stud

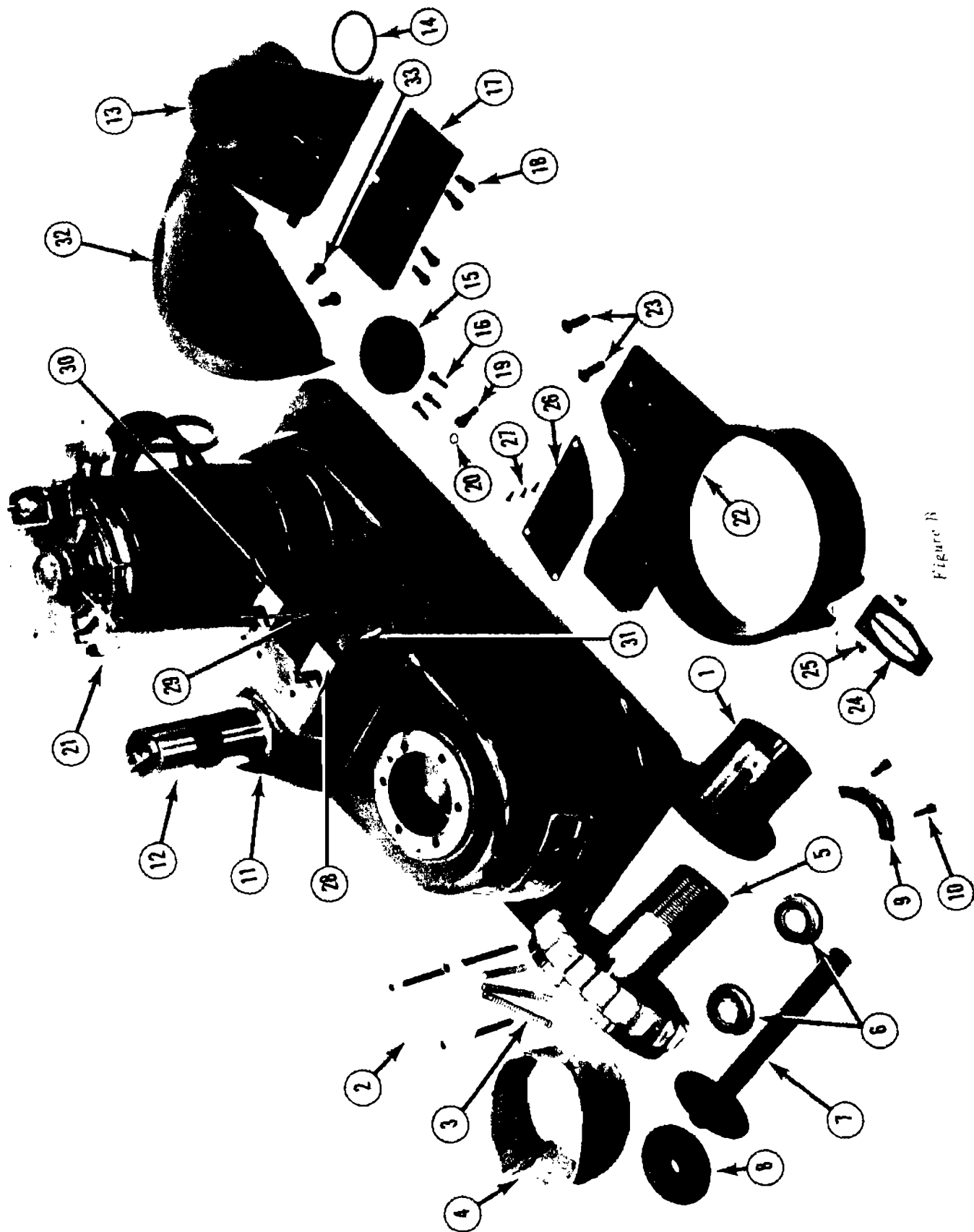


Figure B

PARTS LIST COVERING FIGURE "B"

ITEM NO.	ORDER BY PART NUMBER	DESCRIPTION
1	CRG-768A Spindle Bushing <i>with</i> (Sold only with Item 5) Screws (5/16-18 x 1-3/4 Soc. Hd. Cap)
2	CRG-865A Dust Seal Assembly
3	CRG-873A Springs (3 per pkg.)
4	CRG-870A Dust Sleeve
5	CRG-785A Quill Assembly (Sold only with Item 1)
6	PBR-12A Bearing (N.D. #4993LO4X1C) (1 per pkg.)
7	CRG-790A Spindle Shaft
8	CRG-877A Grinding Wheel Nut
9	CRG-796A Half Nut <i>with</i>
10	 Screws (10-32 x 3/4 Soc. Hd. Cap)
11	CRG-816A Stop Cam Button <i>with</i> Screw (10-32 x 1/2 Soc. Hd. Cap)
12	CRG-814A Pivot Post <i>with</i> Washer (5/8 AM. Std. Medium Sec. Lock) Screw (5/8-11 x 1-1/2 Hex. Hd. Cap)
13	CRG-891A Table (SEE NOTE at bottom of page) <i>with</i>
14	CRG-896A "O" Ring (Houghton #226)
15	CRG-894A Cam Cap <i>with</i> Washers
16	 Screws (10-32 x 5/8 Soc. Hd. Cap)
17	CRG-898A Clamp Table Face (SEE NOTE at bottom of page) <i>with</i>
18	 Screws (1/4-20 x 5/8 Soc. Hd. Cap)
19	CRG-899A Screw <i>with</i>
20	CRG-897A "O" Ring (Houghton #011)
21	CRG-850 Motor Assembly (Specify Voltage <i>and</i> frequency if other than 115/230 Volt, 60 Cycle) includes key, switch cover, switch, cord and plug.
22	CRG-882A Grinding Wheel Guard <i>with</i>
23	 Screws (5/16-18 x 7/8 Button Hd. Soc. Cap)
24	CRG-883A Index Plate <i>with</i>
25	 Screws (8-32 x 3/8 Button Hd. Soc. Cap)
26	CRG-884A Guard Plate <i>with</i>
27	 Screws (6-32 x 3/8 Flat Hd. Soc. Cap)
28	CRG-811A Gage Surface Plate (SEE NOTE at bottom of page) <i>with</i> Screws (Special 1/4-20 Shoulder)
29	CRG-812A Gage Rod Spring <i>with</i> Screws (10-32 x 1/4 Button Hd. Soc. Cap)
30	CRG-813A Gage Rod Guide <i>with</i> Screw (6-32 x 5/8 Button Hd. Soc. Cap)
31	CRG-817A Shoulder Screws (2 per pkg.)
32	CRG-907A Wheel Cover <i>with</i>
33	 Screws (5/16-18 x 7/8 Button Hd. Soc. Cap)

NOTE: Items 13, 17 & 28 require shimming at time of installation to assure proper alignment.
See Operating and Maintenance Instructions supplied with your machine.

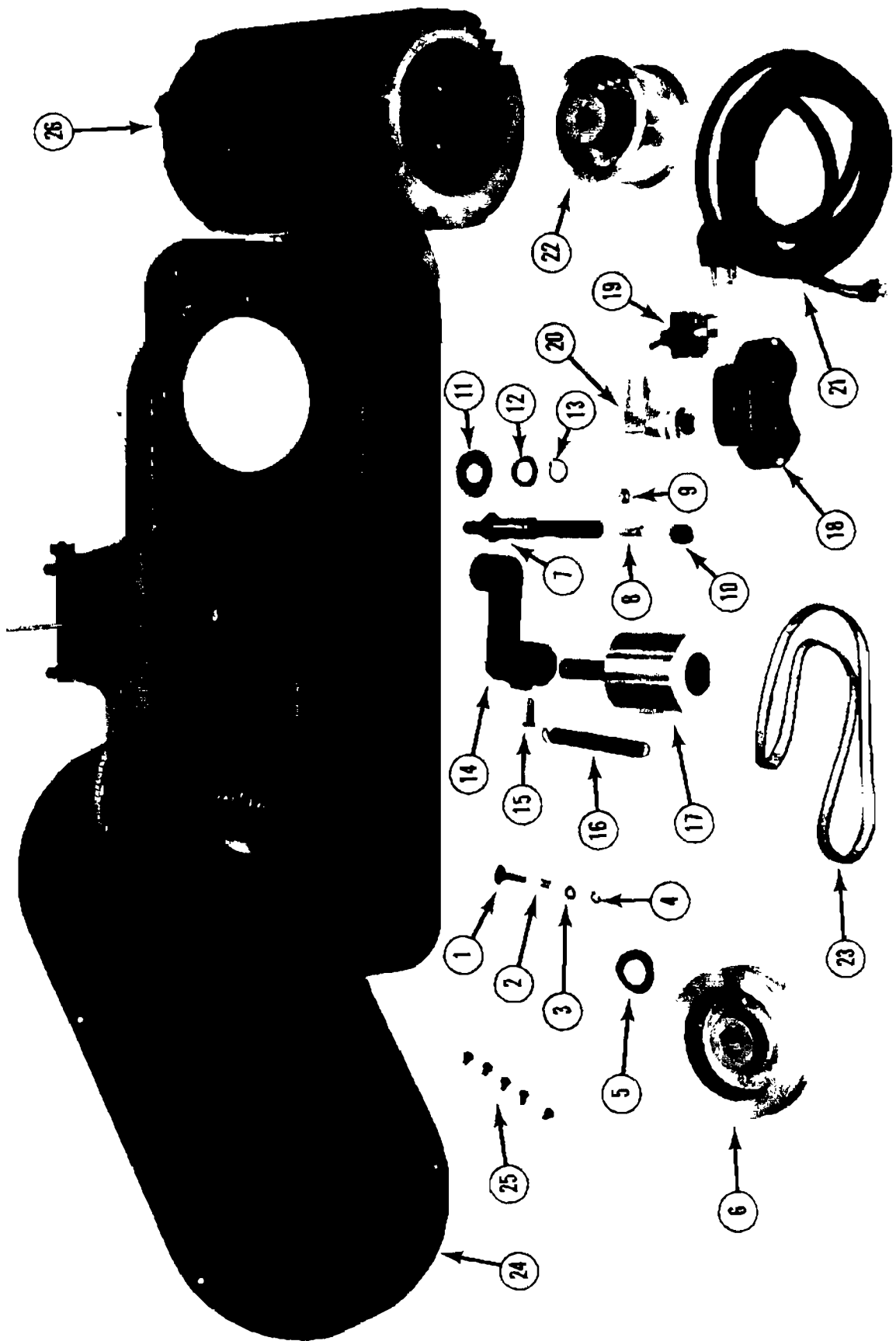


Figure C

PARTS LIST COVERING FIGURE "C"

ITEM NO.	ORDER BY PART NUMBER	DESCRIPTION
1	CRG-772A Detent Button <i>with</i>
2	 Spring
3	 Washer
4	 Retaining Ring
5	CRG-844A Spring Washer
6	CRG-842A Spindle Pulley <i>with</i>
	 Set Screw (1/4-20 x 3/8 Soc. Hd. Cup Pt.)
7	CRG-827A Idler Stud <i>with</i>
8	 Screw (1/4-20 x 1-1/4 Hex. Hd. Cap)
9	 Nut (1/4-20 Hex.)
10	 Neoprene Bumper
11	CRG-828A Felt Washer
12	PG-932A Spring Washer <i>with</i>
13	 Retaining Ring (Truarc #5100-62-S)
14	CRG-831A Idler Arm <i>with</i>
15	 Screw (1/4-20 x 3/4 Hex. Hd. Cap)
11	CRG-828A Felt Washer
16	CRG-838A Spring
17	CRG-835A Idler Pulley <i>with</i> Bearing
18	CRG-861A Switch Housing
19	CRG-299D Switch <i>with</i>
	 Leads
	 Insulator
	 Indicator Plate
	 Screw (6-32 x 3/16 P.K. type "F")
20	PEC-110A Angle Connector <i>with</i> Cord Grip
21	LBN-305D Cord Set
22	CRG-847A Motor Pulley <i>with</i>
	 Set Screw (1/4-20 x 3/8 Soc. Hd. Cup Pt.)
	 Key
23	MBB-910 Flat Belt (37-1/4 Long)
24	CRG-853A Bottom Cover <i>with</i>
25	 Screws (10-24 x 3/8 Button Hd. Soc. Cap)
	 Gasket (53" Length of Vinyl Foam Tape)
26	 Motor (SEE ITEM 21, Figure B)

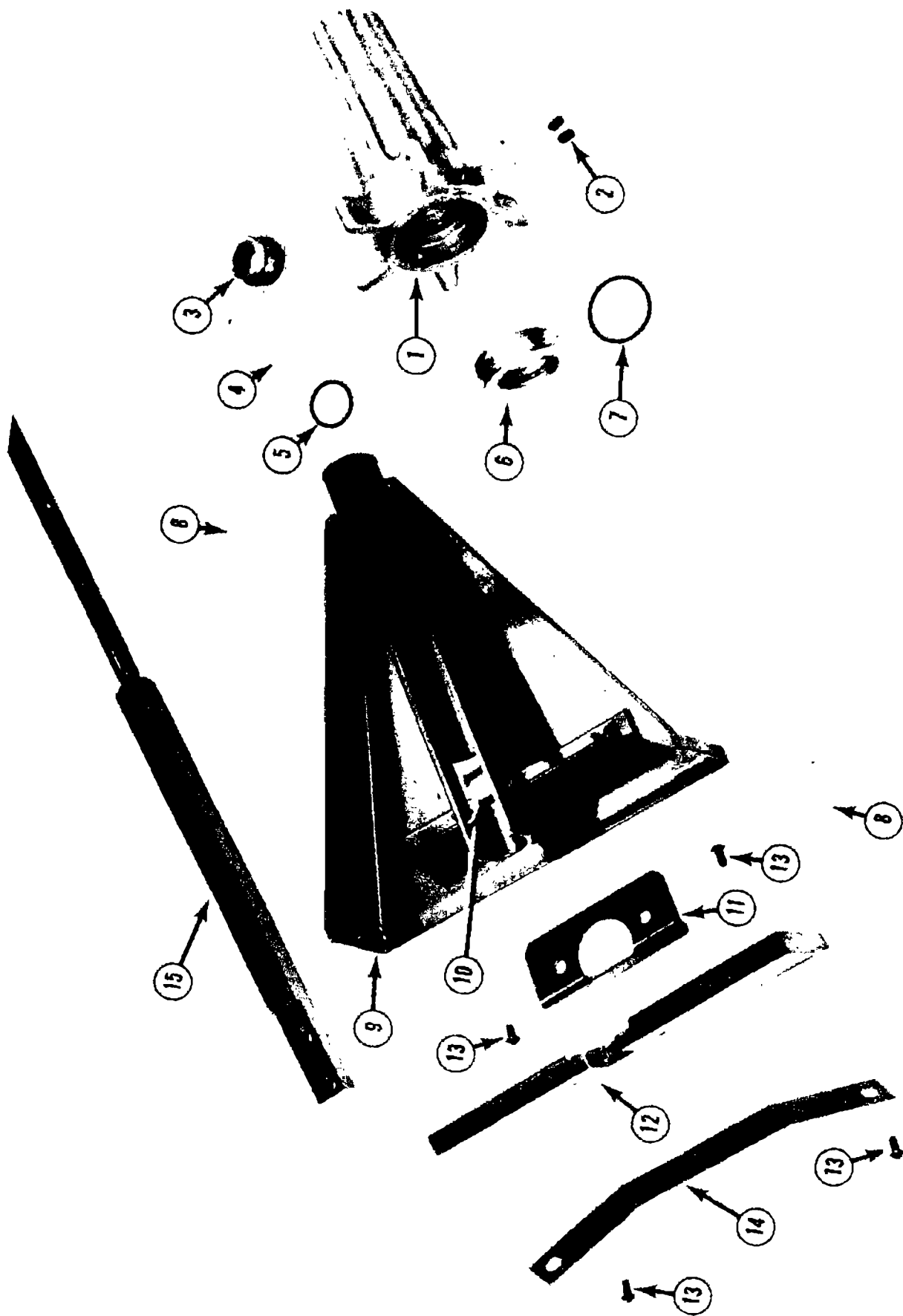


Figure 11

PARTS LIST COVERING FIGURE "D"

ITEM NO.	ORDER BY PART NUMBER	DESCRIPTION
1	CRG-932A Clamp Handle <i>with</i>
2	 Set Screws (8-32 x 1/4 Soc. Hd. Cup Pt.)
3	CRG-944A Thrust Bushing <i>with</i>
4	 Thrust Washer
5	 "O" Ring (#ARP 568-016)
6	CRG-933A Handle Insert <i>with</i>
7	 "O" Ring (#ARP 568-020)
8	PHR-316A Retaining Ring (Truarc #5103-87-S) (2 per pkg.)
9	CRG-935A Clamp Rod Cover <i>with</i>
10	CRG-938A Spring <i>with</i>
	 Screw (6-32 x 1/4 Button Hd. Soc. Cap)
	 Nut & Lockwasher
11	CRG-943A Cover Retainer
12	CRG-942A Clamp Face <i>with</i>
13	 Screws (6-32 x 1/4 Button Hd. Soc. Cap)
14	CRG-947A Clamp Face Spring <i>with</i>
13	 Screws (6-32 x 1/4 Button Hd. Soc. Cap)
15	CRG-931A Clamp Rod <i>with</i>
	 Screws (8-32 x 3/4 Flat Hd. Soc. Cap)